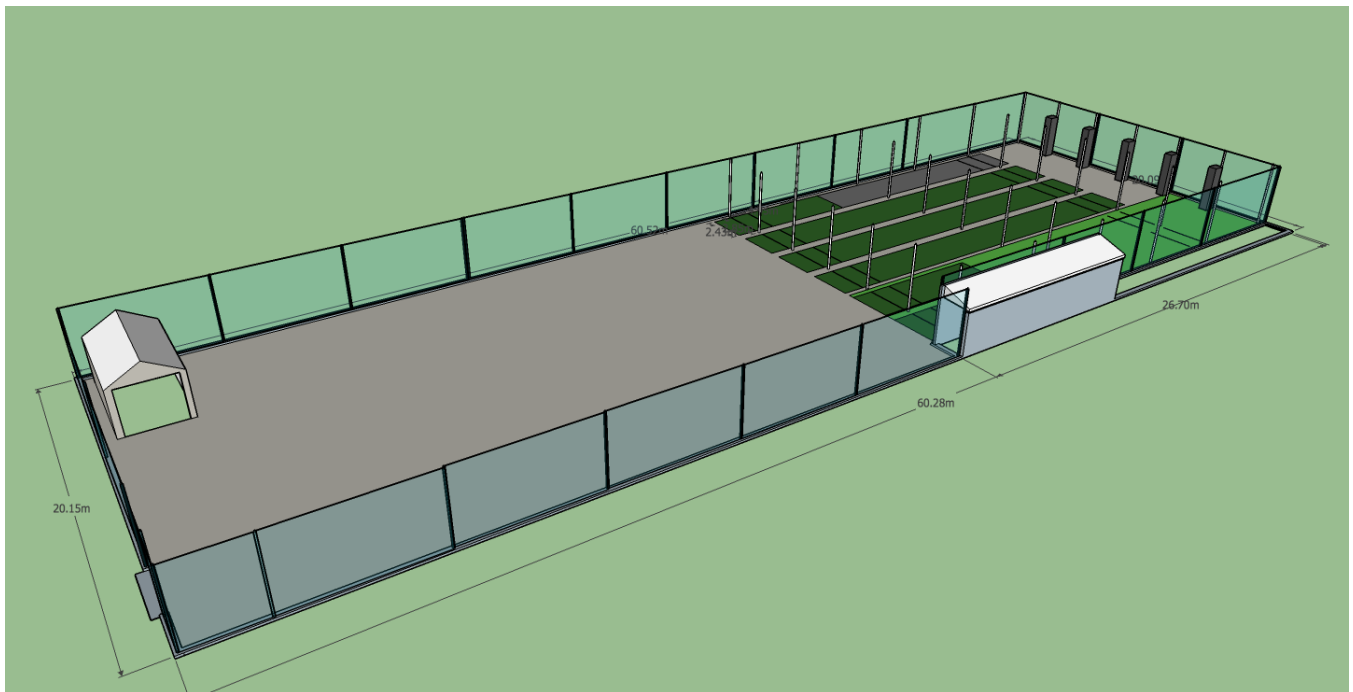


Malé, Maldives

Outdoor Cricket Net Facility Refurbishment



Objective

To replace the existing Outdoor Cricket Net Facility in Malé, Maldives with an up to date, modern facility that maximises the space available to create:

- 4 Synthetic lane net system
- 2 turf lane netting system
- Landscaping & Area Preparation
- Concrete Surface 60 x 20m
- Floodlights to provide sufficient light (LUX) for cricket activities
- Equipment Store Room

Current Facilities

The current facilities consist of 2 concrete lane net systems, 1 turf lane net system and an open area made of sand and patchy grass. There are no lights in operation in the whole are; therefore no cricket activities can be played during the hours of darkness.





4 Synthetic Lane Net System (\$5,000)

Install 33 posts into prepared sleeve footings; install 5 lane nets for synthetic and 1 roof net. Install Synthetic Grass with sewn white crease lines as pictured below:



2 Turf Lane Netting System (10,000)

Using prepared posts and sleeve footings; install 3 lane nets for turf and 1 roof net.



Landscaping & Area Preparation (\$5,000)

Trees, bushes and shrubs will also be cut back to allow for maximum daylight into the area. The existing chain link fencing removed and one concrete slab with 33 sleeve footings is to be installed. The concrete is to be designed to allow for water drainage into the adjacent main drain system.

Concrete Surface 60 x 20m (\$10,000)

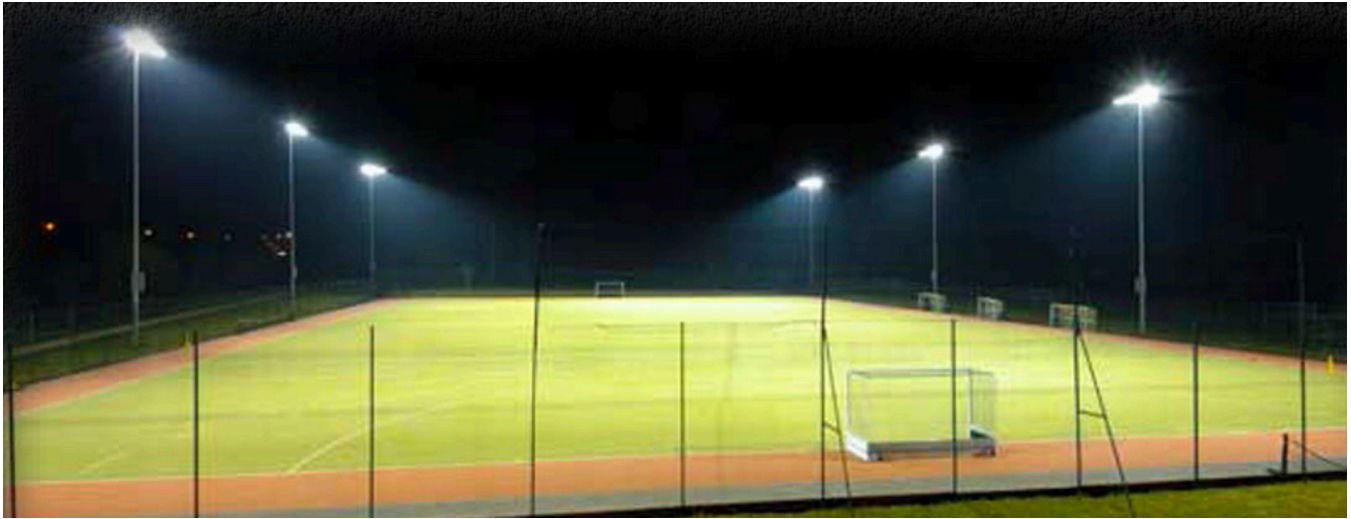
A flat, well drained service created on the concrete slab suitable for Training, Practice and Fitness sessions similar to the area you can see in the image below:



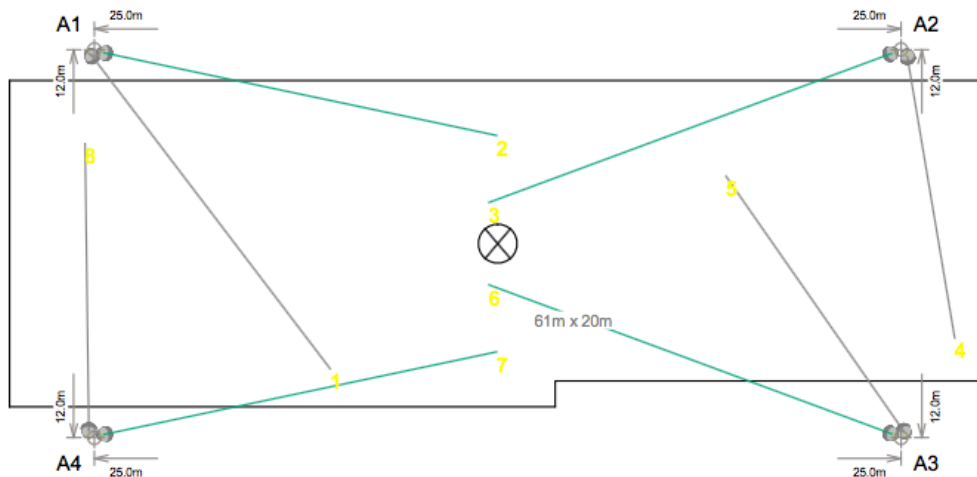
Floodlights to Provide Sufficient Light (LUX) for Cricket Activities (\$19,000)

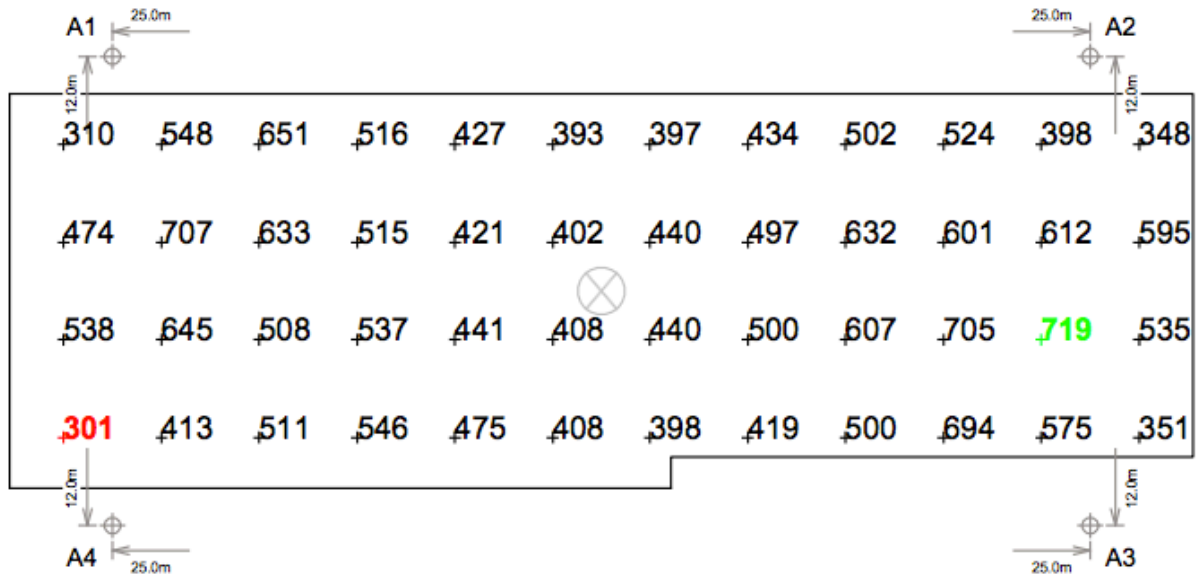
Floodlights to provide sufficient light (LUX) for cricket activities to be played during the hours of darkness. 4 pylons would be situated on the perimeter of the area and be pointed at specific angles to create the most light on the playing area.

Similar Image below:



EQUIPMENT LIST FOR AREAS SHOWN								
Pole				Luminaires				
QTY	LOCATION	SIZE	GRADE ELEVATION	MOUNTING HEIGHT	LAMP TYPE	QTY / POLE	THIS GRID	OTHER GRIDS
4	A1-A4	12.19m	-	12.19m	1500W MZ	2	2	0
4	TOTALS					8	8	0





Equipment Store Room (\$4,000)

A structure large enough to store both playing equipment and ground maintenance tools. 25ft x 15ft

Who Will Use The Facilities?

These outdoor facilities, with lights, can be used (realistically) for 18 hours a day. Beginning with the Youth Development Programme at 6am to 9am, School cricket throughout the morning with the afternoon and evenings shared with Domestic Club Cricket teams and our Maldives National Cricket Team.

What Will Be Achieved?

Creating facilities that are on par, or not better than those of other cricket playing nations will give cricket in the Maldives a footing to remain being the most successful international sports team representing Maldives by ensuring our youth, schools and clubs have the best facilities available. The National Team can also improve and target the ICC World Cricket League membership for the upcoming years.